

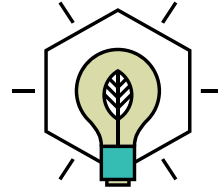
# ACTIVE CHILLED BEAMS

ACB20 (2 WAY)



 **DADANCO**  
feel the difference™

# BUILT ON INNOVATION



**THE LOW HEIGHT** twin vertical coil ACB20 (2-way) Active Chilled Beam avoids all the concerns with using inferior inclined coil beams, without exceeding a height of 11 1/2".

## PRODUCT DATA AND PERFORMANCE

**Primary Airflow** 5 to 40 CFM/LF @ Static pressure range of 0.2" - 0.7"WG

**Secondary Chilled Water**- 0.5 - 2.4 GPM

**Performance Range** 500 - 1800 BTUH/LF.

**Discharge** 2- way

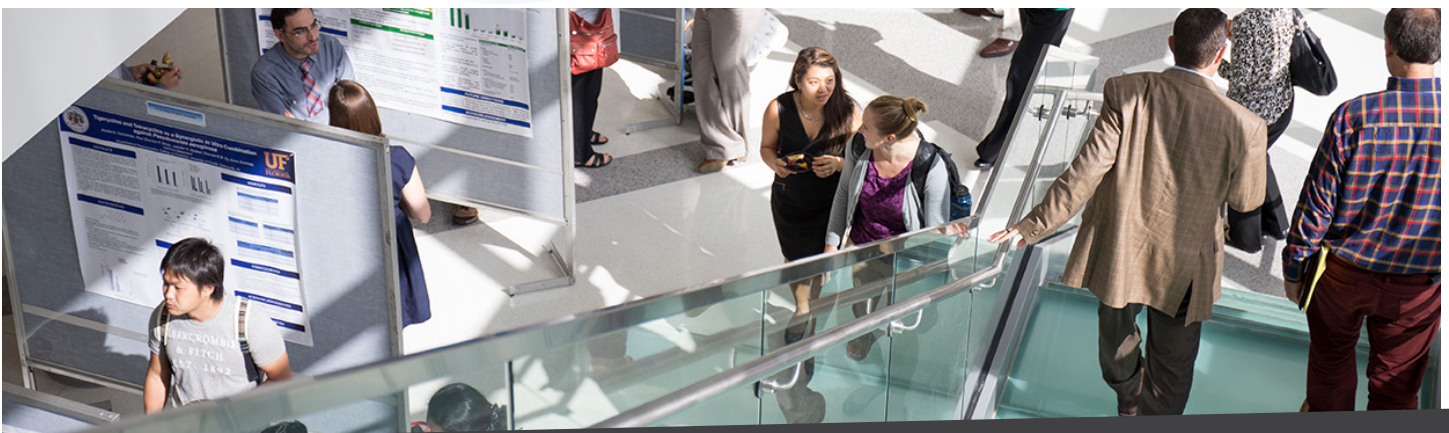
**Coil** - Vertical 2 or 4 pipe option with drain pans and sweat or NPT fittings

**Primary air connection**- Side or top entry as standard

**Sizes**- From 2 to up to 10ft in 1ft increments with optional Merv 8 filter

## COMMON APPLICATIONS

The traditional perforated faced ACB20 is best in applications where humidity may be a concern such as entryways or elevator lobbies where doorways are constantly opening letting outside air in. Typically the ACB20 best suits T-Bars at 24" centers with flat and tegular edge boarder styles as standard.





**PERFORMANCE CHARACTERISTICS**

SIZE		TYPICAL CAPACITY			SOUND LEVEL
Width	Height	Cooling (BTUH)	Heating (BTUH)	Primary Airflow (CFM)	
24"	11.3"	1,500 - 10,000	12,000	15 - 180	NC15-NC30

**CEILING MOUNTED ACB CASSETTE**  
(VERTICAL COILS AND DRAIN PANS)

Designed to excel in applications where humidity control may be an issue – such as entrance or elevator lobbies – the ACB20 fits into a standard 24" wide suspended ceiling in lengths up to 6 feet in 1-foot increments.

# ACB 20





The Luxton-Reed Center  
47 Westfield Industrial Park Road  
Westfield, Massachusetts 01085

(413) 564-5657  
info@dadanco.com

 Dadanco

 DadancoHVAC

 Dadanco

[WWW.DADANCO.COM](http://WWW.DADANCO.COM)

